



Friday 8th November 2024
The Royal Lancaster Hotel



#SWA24

  @socialworkaward

www.socialworkawards.com



Welcome to the Social Worker of the Year Awards 2024

Tonight is the one night in the calendar year when social workers are given the recognition they rightfully deserve, and we can shine a spotlight on the superb work you are doing, often supporting the most vulnerable in society. And, it is all about you!

There is no profession quite like social work. We must help people navigate through challenging times in their lives using both our professional and personal resources. We must bring their voices to the forefront using tools and advocacy. We talk a lot, but we listen a lot more. We may be seen with fondness, acceptance, fear or animosity. Whichever it is, we walk side-by-side with someone, working to get them closer to where they want to be.

The Social Worker of the Year Awards is the only major national awards event for social work in England. As a not-for-profit charity set up by a social worker, Beverley Williams MBE, the Awards exist for the positive promotion of the social work profession and for the recognition and celebration of those changing lives, systems, hearts and minds with their dedication.

We want to listen more to the ideas of the social work community, so please do tell us any thoughts you have about how we can achieve even greater recognition for the profession.

It is a profession that always evolves and is abundant with challenges, and we know that on some days those challenges feel beyond us. With the right support from our colleagues, managers, employers and networks we can make a difference, big or small, that gives someone the strength they need to keep moving forward.

So, tonight: we see you, we recognise what goes into your every day and we celebrate you, finalists and winners alike, for being part of the change you want to see.

Thank you to each and every sponsor for making this event possible and for standing proud in support of social workers. Thank you to our independent judges from all corners of social work who spent hours reading, scoring and debating over the entries.

Finally, thank you for all the work you have put in and the skill you have shown that has got you here.

We are thrilled to welcome you all!

Peter Hay CBE, Chair of the Board of Trustees, Social Work Awards Ltd.



The Board of Trustees

From top (L-R): Ana Popovici, Brian Mitchell, Dr Clenton Farquharson MBE, Lisa Buttar, Vava Tampa, Gary Spencer-Humphrey, Peter Hay CBE – Chair, Rob Mitchell MBE, Jon Glasby, Sherry Malik – Vice Chair

Welcome to the Social Worker of the Year Awards

#SWA24

A special thanks to our Sponsors

Headline Sponsor

BASW England

The professional association for
social work and social workers



Corporate Partner



Public Sector Sponsor



Category Sponsors



Thank You Sponsor



Emma Lewell-Buck MP

Patron of the Social Worker of the Year Awards



As a former social worker, I know how every single day, each and every social worker is going above and beyond supporting people to improve their lives and keep them safe.

I know how stepping into the hardest moments of people's lives whilst also being faced with cuts to services, increased workloads and pressure can leave you feeling numb and exhausted, I have been there.

But I also know how rewarding making positive changes to the lives of those you work with can feel and how that drives you to keep going.

You are the ones that, despite the relentless challenges, are making a difference every single day, fighting tirelessly for those who are often overlooked, helping them find strength, dignity, and a way forward.

I am delighted that the Social Worker of the Year Awards is able to recognise you for it.

So, congratulations to the winners. Congratulations to the nominees. But most of all congratulations to all of you for being in one of the greatest professions there is.



Running order

We are delighted to welcome back broadcaster, Ashley John-Baptiste, as our special guest this evening to present the awards.

This will be Ashley's fifth time hosting the awards ceremony. Ashley has just published *Looked After*, a book about his childhood growing up in care. He is passionate about raising the aspirations of looked-after children and credits his social worker for helping him get to where he is today.

17:45 – Welcome by Peter Hay CBE, Chair of the Social Work Awards Board of Trustees

18:00 – Dinner is served

19:30 – Awards ceremony follows in the order below:

Introductions – Peter Hay CBE, Chair of the Board of Trustees, host Ashley John-Baptiste and Vava Tampa, BASW England Chair (Headline Sponsor).

- ◆ **Social Work Student of the Year**
- ◆ **University Social Work Lecturer of the Year**
- ◆ **Newly Qualified Children's Social Worker of the Year**
- ◆ **Newly Qualified Adult Social Worker of the Year**
- ◆ **Practice Educator of the Year**
- ◆ **Technology-Enabled Lives and Innovation in Practice Award**
- ◆ **Mental Health Social Worker of the Year**
- ◆ **Approved Mental Health Professional (AMHP) of the Year**

Guest Speaker

- ◆ **Team of the Year, Children's Services (including MDTs)**
- ◆ **Team of the Year, Adult Services (including MDTs)**
- ◆ **Practitioner-led Research Award**
- ◆ **Supportive Social Work Employer Award**
- ◆ **Social Justice Advocate Award**
- ◆ **Team Leader of the Year, Children's Services**
- ◆ **Team Leader of the Year, Adult Services**

Guest Speaker

- ◆ **Children's Social Worker of the Year**
- ◆ **Adult Social Worker of the Year**
- ◆ **Lifetime Achievement Award**
- ◆ **Overall Social Worker of the Year 2024**

After the awards ceremony, a disco will follow and the evening will draw to a close at 11pm.

Please note all timings are approximate and subject to change.

Our judging panel

Judging for the 2024 Social Worker of the Year Awards took place in July, when judges attended virtual and in-person panels to decide this year's finalists and winners.

The independent judging panel consisted of:

- Leading industry professionals invited to join the panel based upon their expertise within the social work profession
- Those who have received support from social workers
- Previous winners

All judges kindly gave up their time on a voluntary basis.

Thank you to our judging panel, we couldn't do it without you!

Asmaat Khan
Social Worker

Angela Connor
Supportive Social Work Employer of the Year Winner 2023

Anna Grainger
Interim Social Care Manager

Bethany Erikson Rodrigues
Independent Senior Social Worker

Bev Williams MBE
Founding Patron of the Social Worker of the Year Awards

Christina Addenbrooke
Supporting Children in Education Award Winner 2023

Clare Burnett
Newly Qualified Children's Social Worker of the Year Winner 2023

Colum Conway
Chief Executive, Social Work England

Deb Solomon
Social Worker, Derbyshire County Council

Dionne Haizel-Cobbina
Advanced Practitioner – Camden Children Looked After Team

Elaine James
Social Justice Advocate Award Winner 2023

Fiona Hayward
Families and Children's Principal Social Worker, Wiltshire

Jak Savage MBE
Independent Employer and Social Care Consultant

Janti Champaneri OBE
Former Adults Operations Manager, Birmingham City Council

Kate Concannon
Head of Quality, Governance and Professional Development and PSW. Co-Chair of PSW National Network

Kirsten Bingham
Approved Mental Health Professional (AMHP) of the Year Winner 2023

Lucy Fitzpatrick
Social Worker, Derbyshire County Council

Nadine Boyne
Founder of Social Work DISCOVERY

Noel Beckett
Social Work Improvements and Quality Assurance Consultant

Norah Khan
Mental Health Social Worker

Omaid Badar
Overall Social Worker of the Year 2023 and Children's Social Worker of the Year Winner 2023

Patriche Bentick
Team Manager within the Children Looked After Service, Camden Council

Richard Ashiagbor
Lecturer and Course Leader in Social Work at London South Bank University

Robbie Irwin
Team Manager, Adult Social Care

Sarah Coleman
Social Worker

Sarah Lowe
Lifetime Achievement Award Winner 2022

Tara Morgan
Independent Social Worker Practitioner

Vanna Changlee
Principal Social Worker for Adults

Yvonne Frimpong
Adult Social Worker, Essex County Council



Finalists

Social Work Student of the Year

Name	Place of study
Hannah Louise Barnes	University of Sussex
Katie Teeling	Edge Hill University
Scott Richardson	Open University
Tienga Ngale	Brunel University
Vishal Udaya Kumar	Brunel University

University Social Work Lecturer of the Year

Name	Employer
David Marsland	University of Hull
Emma Ainsley	Canterbury Christ Church University
Nigel Kelleher	Edge Hill University
Rebecca Stephens	University of Sussex
Stephanie Jones	Staffordshire University

Newly Qualified Adult Social Worker of the Year

Name	Employer
Aaron Evans	London Borough of Hounslow
David Heaton	Northumberland County Council
Elizabeth Okankor Badu	Central Bedfordshire Council
Ellie Vincent	Norfolk County Council
Jodie Gooday	Essex County Council
Tafadzwa Nathaniel Gonditii	Humber NHS Teaching Foundation Trust & Hull City Council

Newly Qualified Children's Social Worker of the Year

Sponsored by West Sussex County Council

Name	Employer
Chloe-Ann Turner	Central Bedfordshire Council
Emma Cove	Portsmouth City Council
Helen Podesta	Milton Keynes Council
Holly Shreeves	Central Bedfordshire Council
Klaudia Skubera	Cambridgeshire County Council
Louise Allonby	Essex County Council

Practice Educator of the Year

Sponsored by London Boroughs of Richmond and Wandsworth

Name	Employer
Clare Alexander	North Lincolnshire Council
Maxine Burt	Essex County Council
Tamsin Suttentwood	Essex County Council
Wendy Jill Hardman	Lancashire and South Cumbria NHS Foundation Trust
Zainab Sulaiman	Cambridgeshire County Council

Team of the Year, Adult Services (including MDTs)

Sponsored by UNISON

Adult Learning Disabilities Team	Sunderland City Council
Adult Social Care – Lincoln Hospital	Lincolnshire County Council
Hull Community Mental Health Team	Humber Teaching NHS Foundation Trust
People from Abroad Team	Norfolk County Council
Reconnect: Care After Custody	Lancashire and South Cumbria NHS Foundation Trust
St Richard's Hospice Specialist Palliative Care Social Work Team	St Richard's Hospice

Team of the Year, Children's Services (including MDTs)

Sponsored by West Sussex County Council

Asylum Through Care Team	Redcar and Cleveland Local Authority
Mosaic Foster Care Social Work	Mosaic Foster Care
People from Abroad Team	Norfolk County Council
Staying Together Team	London Borough of Bexley
The Children's Mental and Emotional Health Team	West Sussex County Council

Supportive Social Work Employer Award

Sponsored by Sanctuary Personnel

Cambridgeshire County Council
Hartlepool Borough Council
London Borough of Hammersmith and Fulham
Together For Children, Sunderland
London Boroughs of Richmond and Wandsworth
West Sussex County Council

Team Leader of the Year, Adult Services

Name	Employer
Carol Monahan	Wiltshire Council
Charlotte Gordon	Dudley Metropolitan Borough Council
Gina Grimes	City of Stoke-on-Trent Council
Hazel Welburn	North Lincolnshire Council
Joe Hockaday	Essex County Council
Sue Bunker	Shropshire Council
Yvo Heidemans	Essex County Council

Team Leader of the Year, Children's Services

Name	Employer
Andrew O'Sullivan	London Borough of Hounslow
Carolyn Ellis	Essex County Council
Clare Luxton	Bath and North East Somerset Council
Danielle Jeenah	London Borough of Hammersmith and Fulham
Hayley Driver	Lancashire and South Cumbria NHS Foundation Trust
Michael Radley	London Borough of Sutton

Technology-Enabled Lives and Innovation in Practice Award

Name	Employer
Rebecca Alton	Lincolnshire County Council
Stockton Borough Council Adult Social Care	Stockton Borough Council
TACT Connect	TACT - The Adolescent and Children's Trust
Technology Enhanced Lives Service	Kent County Council

Practitioner-led Research Award

Sponsored by West Midlands ADASS

Name	Employer
Anna Bouch	Brighton and Hove City Council
Dr Julie Feather and Nicola Whiteside	Edge Hill University
Hannah Kingsford	Kent County Council
Katy Cleece	Lancashire and South Cumbria NHS Foundation Trust
Nick Perry	East Sussex County Council
Revelstoke Road Children's Home	Together for Children

Social Justice Advocate Award

Sponsored by Essex County Council

Name	Employer
Anti-Racist Movement (A.R.M.), Independent platform for Black Female Social Workers nationwide	
Dawn Henderson	Dorset Council
Helen Hewitt	Renew/Hull City Council
Natasha Winters	Derby City Council
Ola Tony-Obot and Edward Garwe	Together for Children Sunderland

Mental Health Social Worker of the Year

Sponsored by Lancashire and South Cumbria NHS Foundation Trust

Name	Employer
Anthony Walton	Sunderland City Council
Emma Crowe	Stockton Borough Council
Fran Ashton	Humber NHS Teaching Foundation Trust & Hull City Council
Georgie Dredge	Essex County Council
Hannah Rogerson	City of Doncaster Council
Nicole Jones	Kent and Medway NHS and Social Care Partnership Trust

Approved Mental Health Professional (AMHP) of the Year

Name	Employer
Andrew Jamieson	Stockton Borough Council
Dr Matt Simpson	Wiltshire Council / Bournemouth University
Kenton Fairweather	Sunderland City Council
Lorna Cornett	Brighton and Hove City Council
Richard Nunn	Warrington Borough Council
Stewart Telford	Devon County Council

Adult Social Worker of the Year

Sponsored by Sanctuary Personnel

Name	Employer
Charlotte Chastney	Suffolk County Council
Chloe Lambert	Shropshire Council
Jane Hawthorn	Nottinghamshire County Council
Lauren Warner	Gloucestershire County Council
Parminder Sangha	Worcestershire County Council

Children's Social Worker of the Year

Sponsored by Cafcass

Name	Employer
Debbie Barnes	Essex County Council
Cherry F. Ricketts	London Borough of Hammersmith and Fulham
Hema Johal	Cafcass
Jonas Kurkalang	London Borough of Hounslow
Peter Byrne	Sefton Borough Council

Lifetime Achievement Award

Sponsored by BASW England

Name	Employer
Helen Taylor	Warrington Borough Council
Hilary Barrett	Cafcass
Jennifer Gander	Brighton and Hove City Council
Michael Crozier	Sunderland City Council
Rachel Humphries	Cafcass
Rebekah Button	Kent County Council
Susan Banyard	West Sussex County Council



BASW
England
The professional association for
social work and social workers



BASW.

By your side, every step of the way

With the British Association of Social Workers
you'll get the resources you need to develop
and protect your social work career



Discover more at
basw.co.uk

BASW
England
The professional association for
social work and social workers



Vava Tampa
Chair, BASW England



Maris Stratulis
National Director,
BASW England

BASW England is proud to be the headline sponsor of the Social Worker of the Year Awards 2024. We have been corporate sponsor of the awards for many years, and we are delighted to headline sponsor the 2024 awards. We are committed to celebrating the incredible contribution of social workers and the diversity and intersectionality of the profession.

Together we will celebrate the dedication, passion and achievements of social workers across England and the social work profession with an evening full of recognition, thanks, passion, fun and pride.

We recognise and applaud the contributions of every social worker in the profession and will be celebrating individual exceptional achievements as well as the power of relationship based social work with the people we work with.

We know that social workers face many challenges with increasing pressures felt by the diverse and unique communities we support and the impact on our own wellbeing. In these times it is more important than ever that we celebrate the amazing work you do, delivering 24/7 services and support for children, families, adults and communities – working 'with' and alongside citizens and communities.

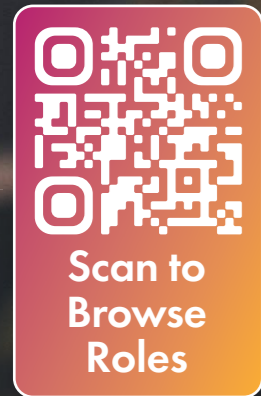
On behalf of BASW and BASW England, thank you for your amazing work. The Social Worker of the Year Awards celebrate the shared qualities, skills, knowledge, and professionalism of social workers. Your responsiveness to planned and unprecedented situations, kindness, compassion, creativity, innovation, unshakeable tenacity, commitment, and steadfast focus as you champion the needs of children, families, adults and communities in our society is to be commended.

BASW England celebrates the social work profession in all its rich diversity and connectedness. From students and newly qualified social workers starting out on their social work careers, to educators, researchers, generic and specialist practitioners, professional leaders and experienced social workers dedicated to working in direct practice, your contributions are invaluable.

As the UK's largest professional social work membership organisation, BASW provides support to social workers, the opportunity to network with colleagues across the UK and internationally. We provide continuous professional development, toolkit resources and guidance, professional support services and work hard lobbying government on the issues that matter to you. We are committed to anti-racism, anti-oppressive practice, and the active promotion of equality and diversity.

BASW is by your side every step of the way, championing social work and helping our members achieve the highest professional standards whilst affording you a voice and continual support in the excellent work you do. BASW pledges to work tirelessly to continue to support you and to promote the social work profession.

BASW and BASW England offer our congratulations to everyone nominated at tonight's awards and to all social workers for your incredible hard work and dedication.



Find your next Social Work role with Sanctuary Personnel

Browse hundreds of exclusive Social Worker jobs on our website, or register today and our award-winning team will match you to the best possible roles in your area.



Thousands of Social Workers Placed Since 2004



Working with Local Authorities Nationwide



Multi-Award-Winning Services



Rated Excellent on Trustpilot



Celebrating extraordinary people

I'm honoured to be involved in celebrating the outstanding contributions of social workers across the country. Your work is truly life changing. Every day, you help build a more compassionate and just society by empowering individuals, families, and communities to overcome adversity and reach their potential.

At Sanctuary Personnel, we are incredibly proud to be part of the Social Worker of the Year Awards once again. This event is a powerful reminder of the difference dedicated, passionate individuals can make. These awards are not just about acknowledging excellence; they're about recognising the courage and commitment it takes to face some of society's toughest challenges. Whether you're working with vulnerable children, supporting adults, or advocating for systemic change, your work is making a profound impact.

One of the most important things we can do is celebrate success and shine a light on the incredible stories that often go untold. Tonight, we come together to do just that. We honour not just the achievements but also the perseverance, creativity, and unwavering dedication that defines the very best of social work.

If you are being celebrated tonight, please accept my heartfelt congratulations. You represent the best of what this profession stands for – compassion, empowerment, and resilience. The work you do may often go unnoticed by the wider public, but know it is deeply valued by those whose lives you touch and everyone around you. Your ability to bring hope, even in the most challenging circumstances, is remarkable.

I also want to acknowledge the collective power of the social work community. It's through collaboration and mutual support that we're able to make lasting change. Whether you're part of a team or working solo on the front lines, you play such a massive part in giving our community hope.

As we celebrate tonight, let's also take the opportunity to connect with one another, share our experiences, and find inspiration in the work of our peers. There is so much we can learn from each other, and so many new ideas and approaches can emerge from these conversations.

It's wonderful to see social workers who have worked with Sanctuary Personnel involved tonight, and I want to extend a sincere thank you to every one of you for your tireless work and commitment. The future is brighter because of what you do. Tonight is about recognising that, and about renewing our collective commitment to making a difference.

Thank you and enjoy your evening!

James Rook
Chief Executive Officer
Sanctuary Personnel



Dan Ruaux
Assistant Director for
Corporate Parenting



Melanie Spencer
Principal
Social Worker

It feels like only yesterday we were sitting down for the opening address of last year's award ceremony, how time flies! Whilst the pressure across the sector remains apparent, positively we have seen another two policy papers published: 'A Future Vision For The Education System' and Childhood Matters, which now join the suite of post covid reforms which we are all well acquainted with. Collectively, they highlight the need to sharpen our trauma-informed and parental anxiety lenses as we navigate the challenges we are all facing. These proposals could lead to significant reform, they will have an impact on our children's lives, helping us work together effectively to enable our children to thrive, whatever their needs, wherever they live. Whilst we will have different views on what changes are needed, we all agree this is a joint endeavour, built on strengthening collaboration and accountability across all partners across our system, clarifying roles, responsibilities, reducing adversity to deliver a child first approach based on need and inclusion.

These principles are already being adopted here in West Sussex, focusing on the holistic needs of our children. This year we have worked with Public Health to prioritise and design a Psychology Hub and Mental Health and Emotional Support service, providing children in and on the edge of care with the support they need. The service brings together, schools, early help, social workers, and wider partners to understand how to identify damaging situations and improve decision making about when it is in a child's best interests to enter care.

This is already achieving greater use of multi-agency approaches to assessment and support for children and families on the edge of care, those in care and those at risk of suicide. It has informed a revised training for early help, schools, social workers and other practitioners as well as improvements in undergraduate and post-qualification training. This will ensure that the network develops a better understanding of the impact of care, suicide prevention and effective interventions. I am delighted that our Children's Mental Health and Emotional Support Team has been shortlisted for the Social Work Awards Team of the Year Award.

Dan Ruaux

Assistant Director for Corporate Parenting

Looking at the year ahead I believe there is a genuine space of optimism. Adopting these principles will affect children's lives and we need to grasp this opportunity to create positive change for them.

As Principal Social Worker at West Sussex, it is my role to consider and support best practice for children and families. To be a Children's Social Worker is an honour and privilege – undertaking in-depth assessments and longer-term interventions with families is complex work and it is important to understand how best to practice in a trauma informed way ensuring that children are safeguarded. This work begins with our Newly Qualified Social Workers as part of our ASYE programme. Here at West Sussex, we have a detailed and comprehensive programme of support for social workers entering into their new careers. It is integral to the retention of workers that we ensure they are fully supported with low caseloads and a package of support from their assessors as well as their team managers, their teams, the directorate and the council as a whole.

This support continues as social workers progress to become experienced social workers and advanced practitioners. The interface I have at a grass roots level with social workers is so important for both their development but also in my role as representing West Sussex at a national level as part of the Principal Social Worker network. Every interaction I have with social workers is an opportunity for my learning, be it out on a visit with a worker, through to my attendance at whole service meetings, team days and sitting in the team areas in the different locality offices.

West Sussex is a Family Safeguarding Local Authority – the practice principles of the model enshrine practice in West Sussex and enable all staff to consider how they work with children, young people and their carers. Considering how to best support staff in this as Principal Social Worker and ensuring that senior leaders understand the complexities is a joint effort in West Sussex. It is the relationships across all departments, from business support, to voice and participation, to our care leaving service, that make the difference – the commitment from all is one of the reasons that I enjoy the work here so much. It is the people who practice in a child focused 'Children First' approach that make the difference every day.

Melanie Spencer

Principal Social Worker

What we do changes lives.



At West Sussex we work hard to ensure our social workers are recognised for the work they do and have the support in place to flourish. We offer flexible working, a strong professional support network and have invested in professional development, so our social workers have a clear career progression pathway.

"I love being a part of a supportive and friendly team and the close connections I have with my colleagues. If you're considering West Sussex County Council as a place to work, I'd highly recommend it! It's very welcoming and the support is second to none!"

If you'd like to find out more about our social work services and what we have to offer, visit:

[westsussex.gov.uk/cscr](https://www.westsussex.gov.uk/cscr) [westsussex.gov.uk/careersinadultsocialwork](https://www.westsussex.gov.uk/careersinadultsocialwork)

Or contact our friendly recruitment team:

hrrecruitment@westsussex.gov.uk 01243 642148

Follow us on LinkedIn: [linkedin.com/showcase/children-first-west-sussex](https://www.linkedin.com/showcase/children-first-west-sussex)



Wandsworth: A model of support for children and families

Wandsworth, a vibrant and diverse inner-London borough, is home to approximately 330,000 residents representing a rich tapestry of communities, cultures, and heritage. Central to our mission is our dedicated workforce, which consists of many children's social workers and a multitude of multi-disciplinary practitioners, all committed to uplifting our communities.

At the core of our Outstanding Practice Framework lies the belief that a family is the ideal environment for a child or young person to thrive and realise their full potential. Our workforce is undoubtedly our greatest asset, and we have invested substantially in training and development.

Our staff are not only well-trained but also accredited in systemic practice and motivational interviewing, tools that enhance their ability to connect with families and address their unique circumstances.

We have established integrated, multi-disciplinary teams that allow us to respond adeptly to the complex needs of families. This collaborative approach enables our practitioners to draw on a wealth of knowledge and expertise, ensuring comprehensive support that is tailored to each family's situation. Our commitment to maintaining low caseloads, implementing Family Safeguarding, and fostering professional development underpins our success. We pride ourselves on creating a supportive workplace environment that allows our social workers to flourish.

"My transition from the children looked after team to the care leavers team has been one of my most pleasurable experiences from my time in care. I have never felt more supported than I currently do, and it simply wouldn't have been as smooth sailing without the support of my PA and the guidance of our pledge," feedback from a care-experienced young person highlighting the transformative effect our dedicated professionals have on the lives of children, young people, and families.

In an increasingly challenging workforce landscape, Wandsworth is honoured to be the employer of choice for many social workers who proudly call our borough their professional home. We celebrate our achievements and remain committed to creating a positive impact in the community.

Ana Popovici, Executive Director of Children's Services
Cllr Kate Stock, Cabinet Member for Children's Services
Rasheed Pendry, Director of Children's Social Care



UNISON is very happy once again to be involved in this year's Social Worker of the Year Awards and to be presenting the Team of the Year, Adult Services Award.

Social workers do vital work in supporting and protecting individuals and communities. We are really pleased that through these awards they are receiving some well-deserved recognition for the work they've done.

As the UK's largest trade union for social workers and the wider social care workforce, we know the challenges social workers face and the differences they make to people's lives. As an organisation built on solidarity and togetherness, UNISON would like to pay tribute to the social work teams that practice effective team working on a daily basis. Great teamwork, alongside high-quality professionalism is at the heart of excellent public service and social work.

We also applaud the social workers across the country who are taking a stand through UNISON against the wider challenges facing the profession like continued austerity, rising demand for services and growing caseloads. The fight for better pay, working conditions and genuine development opportunities will result in better services for the public.

UNISON hopes that all the attendees have a fantastic evening.

Mike Short

National Secretary, UNISON



ESSENTIAL COVER WHEREVER YOU WORK

From
£1.30
a month

For as little as £1.30 a month our members get:

- advice, support and help at work
- a helpline that is open until midnight
- legal help for you at work and your family at home
- plus a wide range of exclusive member discounts.

Annual salary	Monthly cost
Up to £2,000	£1.30
£2,001 - £5,000	£3.50
£5,001 - £8,000	£5.30
£8,001 - £11,000	£6.60
£11,001 - £14,000	£7.85
£14,001 - £17,000	£9.70
£17,001 - £20,000	£11.50
£20,001 - £25,000	£14.00
£25,001 - £30,000	£17.25
£30,001 - £35,000	£20.30
over £35,000	£22.50

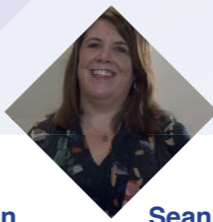
Worried about your job?
In these uncertain times there's never
been a better time to join UNISON.

UNISON – essential cover for you
UNISON is proud to sponsor the
Social Worker of the Year Awards

Join online at joinunison.org or call free on 0800 171 2193



Andrew Errington
Co-chair – WM ADASS
Principal Social



Seanna Lassetter
Co-chair – WM ADASS
Principal Social

At Essex County Council we are committed to recognising the importance of social work colleagues and social care practice. This is why we are thrilled to be a sponsor of these awards and are sponsoring the Social Justice Advocate Award in 2024.

Social care is a hugely rewarding profession, however we recognise it also can be one of the most challenging professions. Social workers work and support individuals, adults, families, children, and young people, through times of crisis and celebration. It is a privilege to participate and collaborate to find solutions and make a difference to all lives and we should all be proud of the efforts made. Being able to recognise and celebrate the dedicated individuals and teams who are making a meaningful impact is incredibly special and well deserved.

Congratulations to all of you nominated, we hope you enjoy the celebrations, and we wish you all the very best of luck.

West Midlands Association of Directors of Adult Social Services (ADASS) is delighted to continue its support of the Social Worker of the Year Awards, by sponsoring the 'Practitioner-led Research' Award in 2024.

Improvement is at the heart of West Midlands ADASS. This means doing things to improve the experience for all adults who need social care in our region, their families and their carers.

Our approach to improvement is driven by a series of regional networks, including our active Principal Social Worker Network which: convenes Principal Social Workers from across the 14 councils in the West Midlands to support each other, identify and respond to challenges, celebrate success and act as ambassadors of the role; strengthens the profile of social work, facilitates consistent approaches, encourages and supports innovative research; engages fully with front line practice, people with lived experience and communities to grow and develop social work.

Sponsoring this award gives us the opportunity to shine a light on the range of innovative practitioner-led research activities which help build, develop and embed a research culture; that improve regional approaches to provide high quality and safe practices in the social care sector and that continue to support people to live the lives they want to lead.

We hope that all nominees feel proud of their achievements, and we would like to express our appreciation to you all for your passion and commitment in working with people and families to achieve the best possible outcomes.



Helen Lincoln
Executive Director for Children,
Families and Education (DCS)



Nick Presmeg
Executive Director, Adult Social Care (DASS)
Essex County Council

Congratulations to all finalists of the Social Worker of the Year Awards 2024

This year we are delighted to be sponsors of the Practitioner-led Research' award

Essex County Council are proud to support the

Social Worker of the Year Awards 2024



Lancashire & South Cumbria
NHS Foundation Trust

Lancashire and South Cumbria NHS Foundation Trust (LSCFT) is delighted to sponsor the Social Work Awards 2024. At LSCFT, we see the value in social work, and that's shown in the fact that out of our 7,000-strong workforce, over 250 are social workers. This makes us the largest Trust employer of social workers within the UK.

As a Trust, we are committed to deliver the highest quality Mental Health, Learning Disability, Autism and Community Care to our population. Our core values are: we are kind, we are respectful, we are always learning and we are a team. These apply to our service users, carers and to each other as colleagues. Sponsoring the Social Work Awards is part of our ongoing commitment to recognise, support and develop social workers in LSCFT who are very much a valued part of our workforce, and enable them to strengthen the skills and core values intrinsic to social work.

As sponsors of the Mental Health Social Worker of the Year category, we wish to say good luck to all those nominated. Regardless of the outcome, you are all making a difference to people's lives, and you should be truly proud of your efforts and commitment.

To find out more about Lancashire and South Cumbria NHS Foundation Trust and to check out our latest vacancies, head to: lscft.nhs.uk/vacancies



We are privileged to be a part of this year's Awards and to sponsor the Children's Social Worker of the Year Award.

Being a children's social worker means building and sustaining many relationships with children and their families in difficulty. It means working without a crystal ball or rule book, but instead with patience, huge skill, courage and determination. It means being accountable for a lasting professional judgement about what is in a child's best future interests.

Taking time to recognise the contributions and help that social workers give to others is simply time well spent and we are delighted to be the sponsor of this award for an individual who will most certainly be remarkable. Cafcass is the largest employer of children's social workers in England. We work across the country representing some 140,000 children in private and public law proceedings every year. We are proud of the work our family court advisers and children's guardians do to support the work of the family courts.

To support and promote the importance of relationship-led practice, we have developed 'Together for Children and Families'. As our practice framework, it is enabling us to do the right things for children and to provide a working environment that enables us all to do our best work. We are an ambitious organisation, proud of our achievements. But we are wanting to do more because that is what children and their families deserve – the best of us, in every contact, every time and wherever they live.

If you come to work with Cafcass, you will experience kindness, clear decision making, the opportunity to work as a court appointed adviser with the benefit of skilled management support and leadership. You will have a voice and you will be a voice for children.

Well done to everyone shortlisted for this award, and especially to the overall winner!

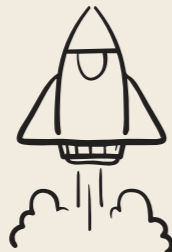
We do more to support our colleagues

In Lancashire and South Cumbria, we do more to recognise, support and develop social workers who are very much a valued part of our workforce, and enable them to strengthen the skills and core values intrinsic to social work.

Start with a good job and end with a great career. Search lscft.nhs.uk/vacancies or scan the QR code



lscft.nhs.uk/vacancies



NHS
Lancashire & South Cumbria
NHS Foundation Trust



Be their voice

At Cafcass, we are united by our purpose - ensuring the unique voices of children and young people are heard in the family court.

We put their needs, wishes and feelings first when big decisions are being made about their futures. When you join one of our social work teams, you will help improve the lives of children families and carers for years to come. And you will be joining an organisation recently rated as 'Outstanding' by Osted in all categories including the quality and effectiveness of both our private law and public law practice, and the impact of our leaders on practice.



Simply scan our QR code to find out more about working with Cafcass



The Social Worker of the Year Awards 2025

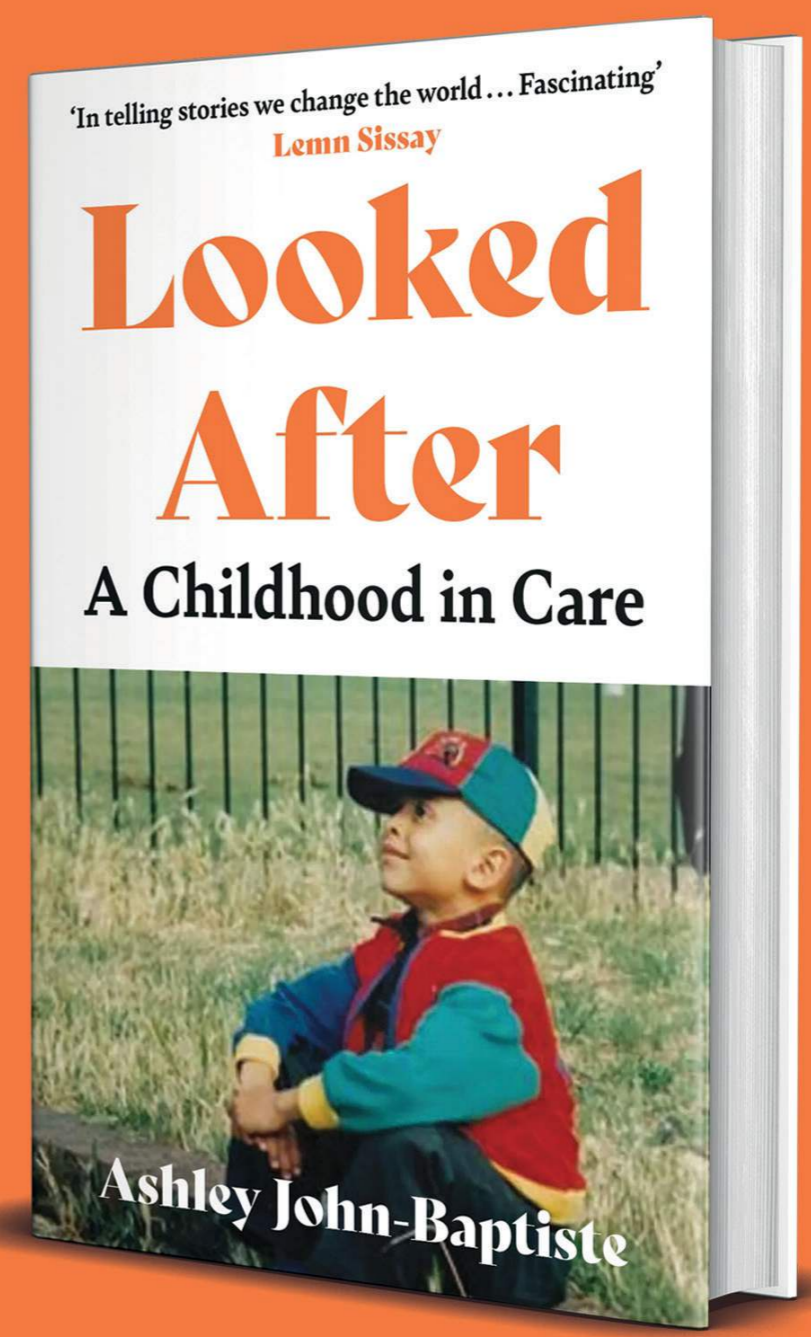
Do you know an inspirational social worker or team? Sign up for our mailing list to be the first to hear when **nominations** for SWA25 will open.

Be part of the awards magic and place your organisation in front of thousands of social workers and key decision-makers in 2025 by becoming one of our **sponsors**.

To find out more email awards@socialworkawards.com or scan the QR code.



'An inspiring story of triumph over adversity'
Fatima Whitbread



'A beautiful and fascinating and enlightening portrait of the care system'
Xand van Tulleken

OUT NOW. SCAN TO SHOP



Step off the train and into the city

Speed to your destination by train.



Scan the code to book your tickets.
avantiwestcoast.co.uk

AVANTI
WEST COAST



Rewards

MAKE EVERY TRIP A TREAT

Take your pick from over **100** offers

Q SWR Rewards



South Western Railway
Spread your wings

PLMR GENESIS
communications + impact

Looking for support with your next event?

WORK WITH US

PLMR Genesis is an award-winning, leading integrated PR and digital marketing agency. Speak to us about how we can help you with our strategic approach to Event Management, PR and Marketing and Social Media.

We are specialists in:

- Event Management
- Strategic PR and Media Relations
- Crisis Communications
- Web Development and SEO
- Digital Marketing
- Social Media
- Graphic Design
- Video Production

Getting your message to your audience in the ways that work.

Our team works with clients across the country.
Contact us to find out more:

- plmr.co.uk/genesis
- 01473 326400
- hello@genesispr.co.uk





social WORKER OF THE YEAR AWARDS 2024



The Social Work Awards Ltd.
Registered in England No. 07581130
Registered Charity No. 1144458
socialworkawards.com